

# Water-related issues and the RDI landscape in the Danube region

**ICPDR** IKSD

International Commission  
for the Protection  
of the Danube River

Internationale Kommission  
zum Schutz der Donau

*Water JPI Workshop on  
International Cooperation in the Danube Region  
5<sup>th</sup> November 2020*



# Welcome to the most *international* River Basin in the World!





# ICPDR Countries



Germany



Austria



Czech Republic



Slovakia



Hungary



Slovenia



Croatia



Bosnia & Herzegovina



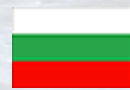
Serbia



Montenegro



Romania



Bulgaria



Rep. of Moldova



Ukraine



European Union



EU Member States (9)

Non-EU Member States (5)



# From Black Forest to Black Sea



**Large variety** of micro-climates and ecosystems



# Human activities and their impact on the Danube



Water pollution, hydromorphological alterations and climate change



# The Danube River Protection Convention

- Main objective:

*ensure that surface waters and groundwater within the Danube River Basin are managed and used sustainably and equitably. It involves the following:*

- the conservation, improvement and rational use of surface waters and groundwater
- preventive measures to control hazards originating from accidents involving floods, ice or hazardous substances
- measures to reduce the pollution loads entering the Black Sea from sources in the Danube River Basin



# The DRPC as the legal mandate of the ICPDR



Sustainable & equitable use of water



Protection of water & ecological resources



Reduce nutrients & hazardous substances



Manage floods & ice hazards

**ICPDR**: platform for **transboundary cooperation** on water management:

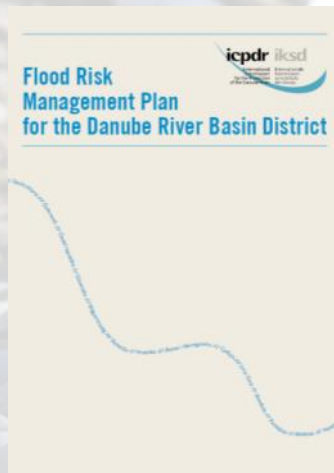
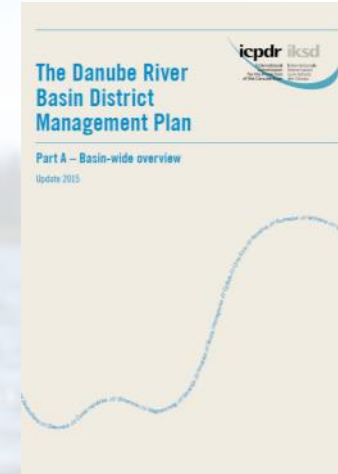
- Implementation of the **DRPC**(1998)
- Coordination of the implementation of EU **Water Framework** Directive (2000) & EU **Floods** Directive (2007)



# Two Management Plans for the Danube River Basin



Danube River Basin Management Plan Update 2015  
(2021 update pending)

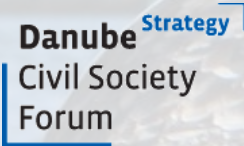


1st Danube Flood Risk Management Plan  
(2021 update pending)





# Stakeholder Involvement: 24 Observers





# Public Participation & Transparency



**Art. 14 (WFD)**  
**Art. 9 & 10 (EFD)**



# The ICPDR Public Participation Toolbox

- 24 Observer Organisations
- A dedicated Public Participation Expert Group
- Outreach activities across a broad spectrum
- Educational tools
- Public information
- Stakeholder consultation
- Social Media
- Inter-sectorial dialogue
- Branding campaigns

## 3 Pillars for our action



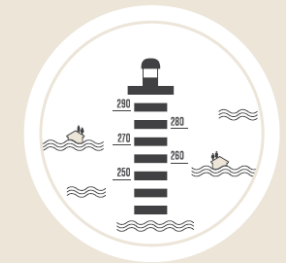
**Cleaner**

cleaner water



**Healthier**

a healthier home for aquatic  
animals and plants



**Safer**

a safer environment for people to  
live without the fear of floods



# Social Media



**Our News  
Ticker**



**Our Image  
Platform**

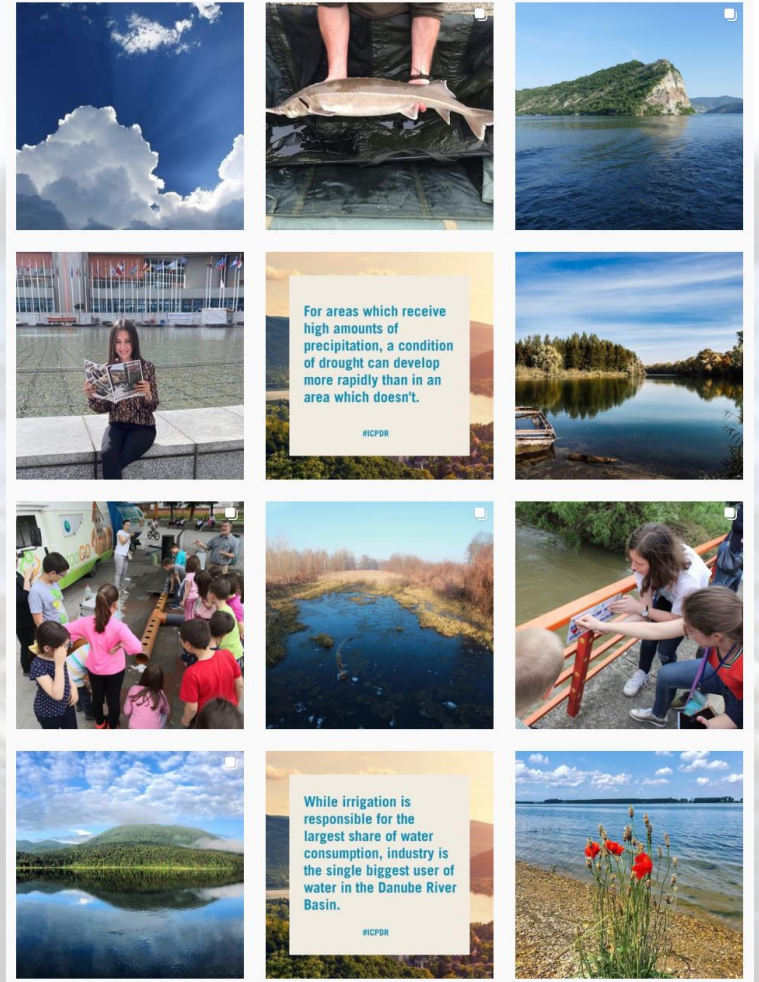


**Our Visual  
storyteller**



**Connecting  
professional  
Platform**

**#ICPDR #KeeperOfTheDanube #ICPDRFamily**





# Communications: What The ICPDR Can Teach Us

We have experience with:

- **Technical information and expertise**
- **Working internationally – both in and out of the EU**
- **Navigating between sectors, establishing a solutions-oriented dialogue with navigation, agriculture, conservation, hydropower and more**
- **Communicating in an understandable international language for the broader public, without losing sight of the scientific facts**
- **Cross-fertilising new innovations and research, and finding synergies towards ground-breaking work (e.g. JDS4 river monitoring)**

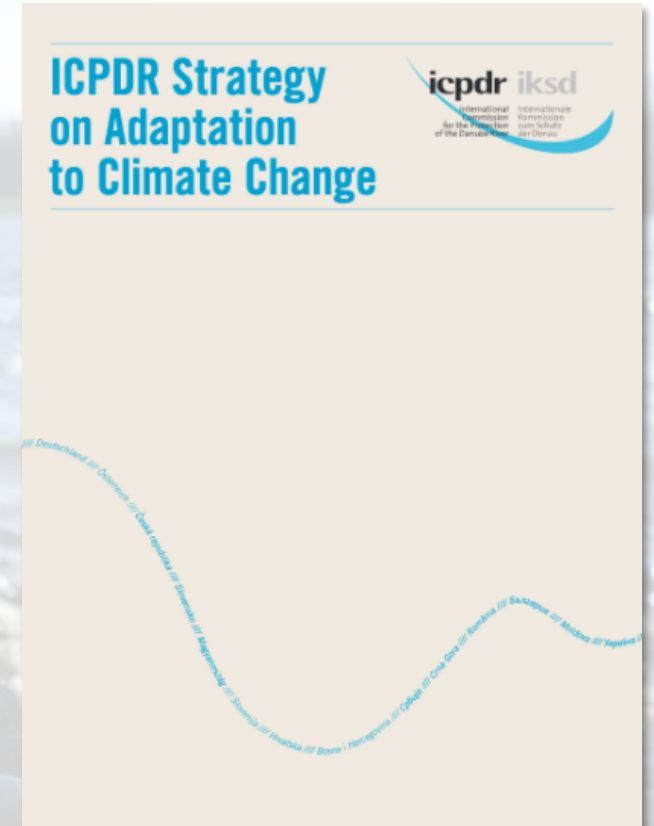


# Planning for Tomorrow: Climate Change

In **2012**, the ICPDR was the first River Basin Organisation of its kind to adopt a Climate Change Adaptation Strategy

Based on its strategy, the ICPDR fully integrated climate adaptation issues into its updated Danube River Basin Management Plan 2015, plus the first Danube Flood Risk Management Plan in 2015.

*The ICPDR recognised Effects of climate change (drought, water scarcity, extreme hydrological phenomena and other impacts) as a fifth SWMI*





# Planning for Tomorrow: Update in 2018

The old strategy needed to be updated  
– so in 2018 we did just that!

Three-step approach:

1. Update of the existing knowledge base
2. Adaptation Workshop
3. Update of the existing strategy

Also added the additional feature of a new  
**Climate Change Adaptation Measures Toolbox:**

**Climate Change Adaptation Measures Toolbox**

This page provides a comprehensive and easy to use toolbox of possible adaptation measures. Please select one or more of the group filters below to obtain detailed information on the measures of interest. Please find more information in the [ICPDR Strategy on Adaptation to Climate Change](#).

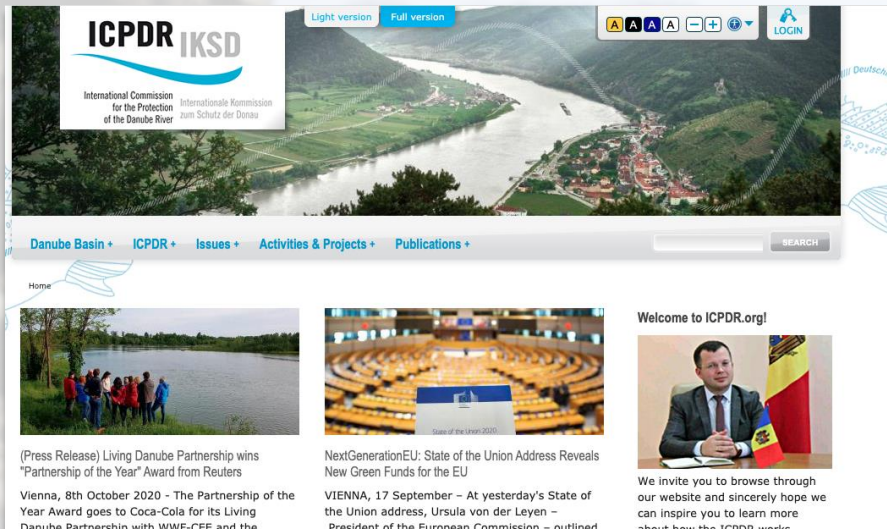
Field of measure	Type of measure	Time horizon	Related to
<input type="text" value="- Any -"/>	<input type="text" value="- Any -"/>	<input type="checkbox"/> long-term <input type="checkbox"/> medium-term <input type="checkbox"/> short-term	<input type="checkbox"/> FD <input type="checkbox"/> WFD

Please select at least one option above to list the related measures.

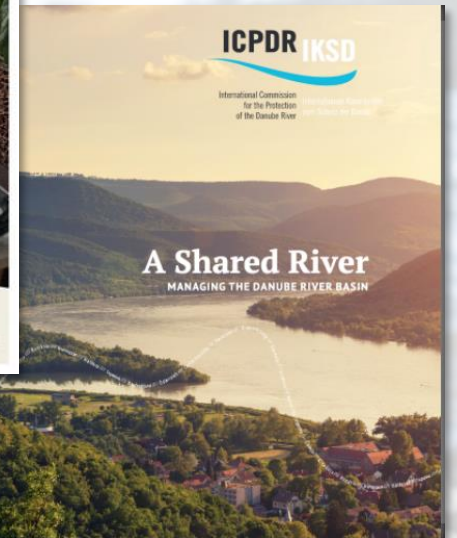




# Find out more...



Visit [www.icpdr.org](http://www.icpdr.org)



Further reading & ICPDR publications